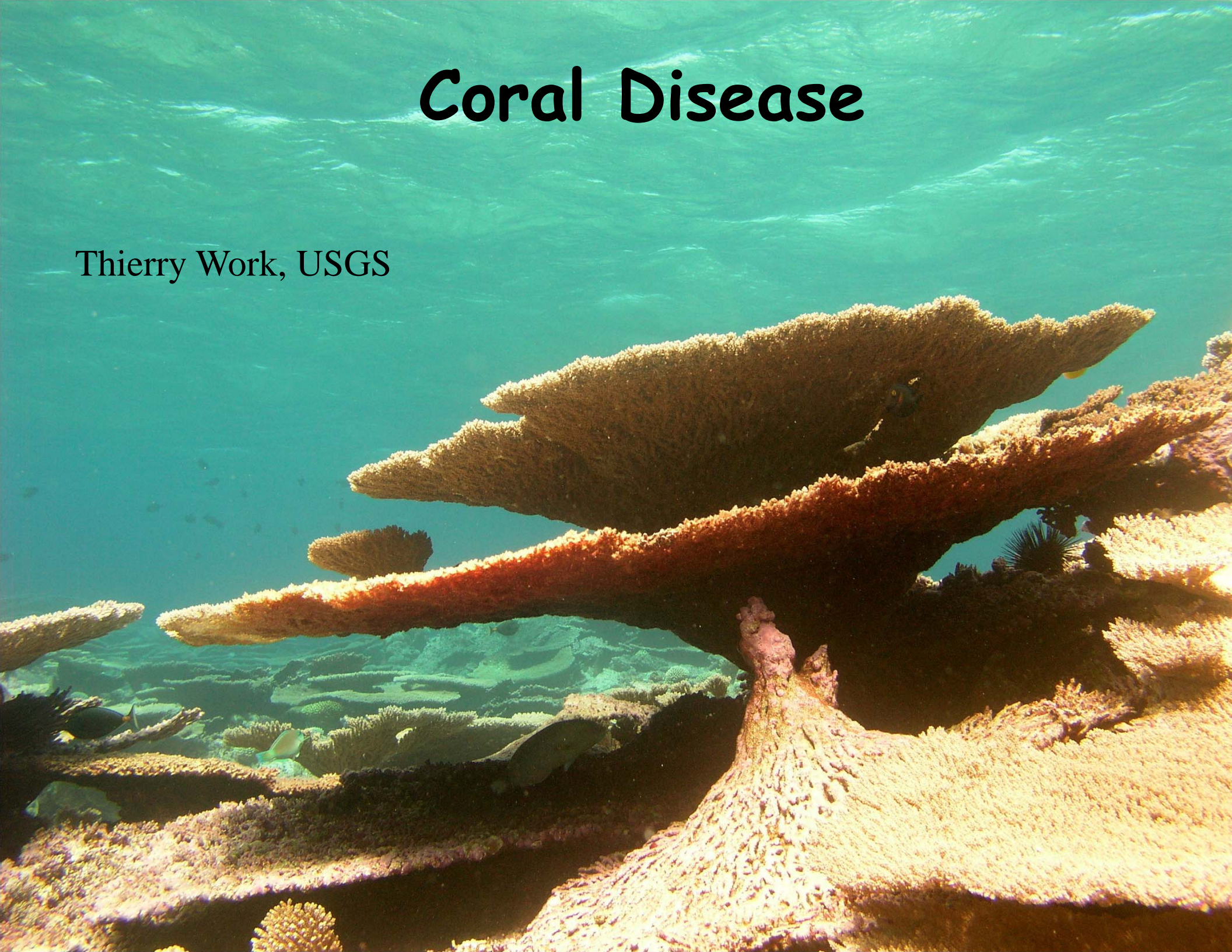


# Coral Disease

Thierry Work, USGS

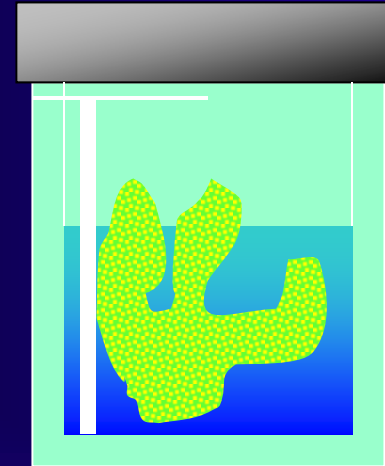




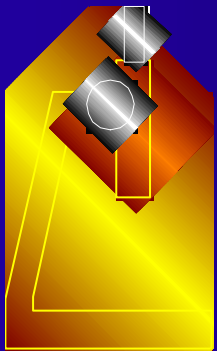
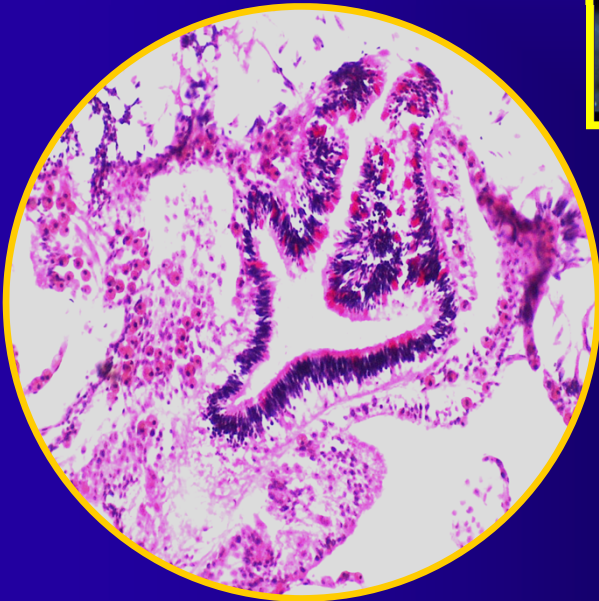
PHOTOGRAPH &  
COLLECT



FIX &  
DECALCIFY



TRIM &  
EXAMINE

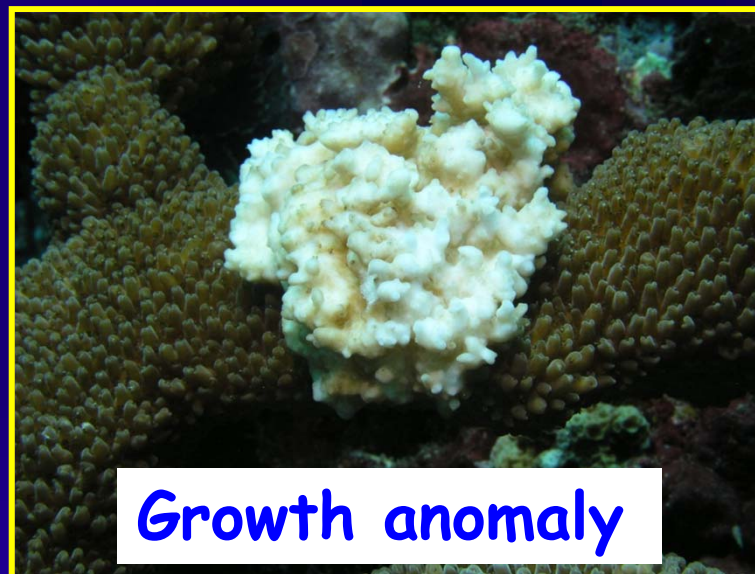




**Tissue loss**



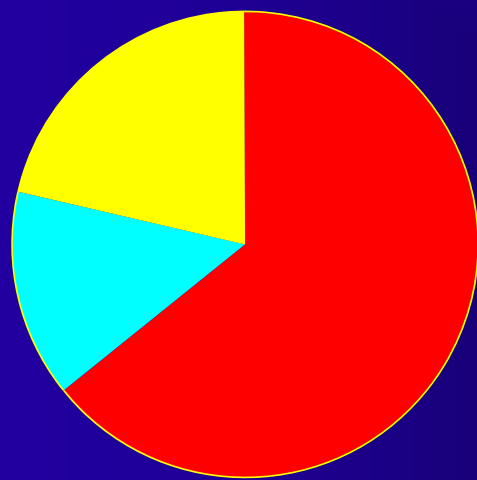
**Discoloration**



**Growth anomaly**

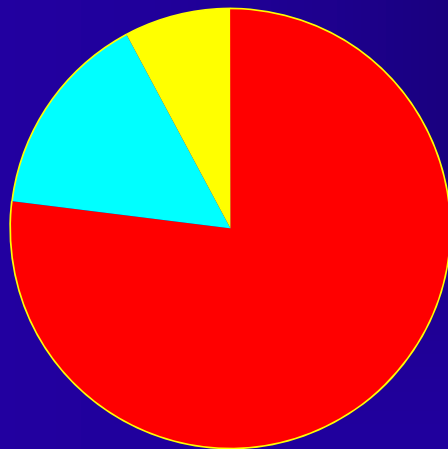
# GROSS VERSUS HISTOLOGY

BLEACHING n=14



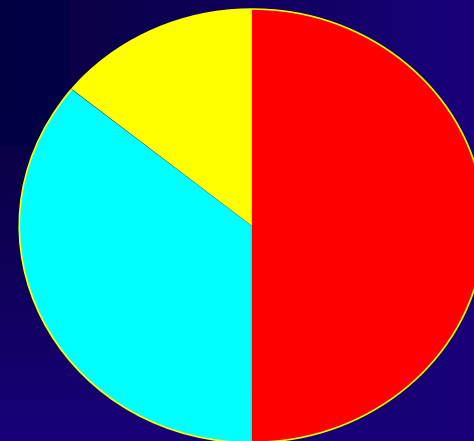
- Depletion
- Necrosis+Algae
- Necrosis

GROWTH ANOMALY n=13



- Hyperplasia
- Necrosis+Algae
- Metazoan

TISSUE LOSS n=14



- Necrosis+algae
- Necrosis
- Necrosis & ciliates

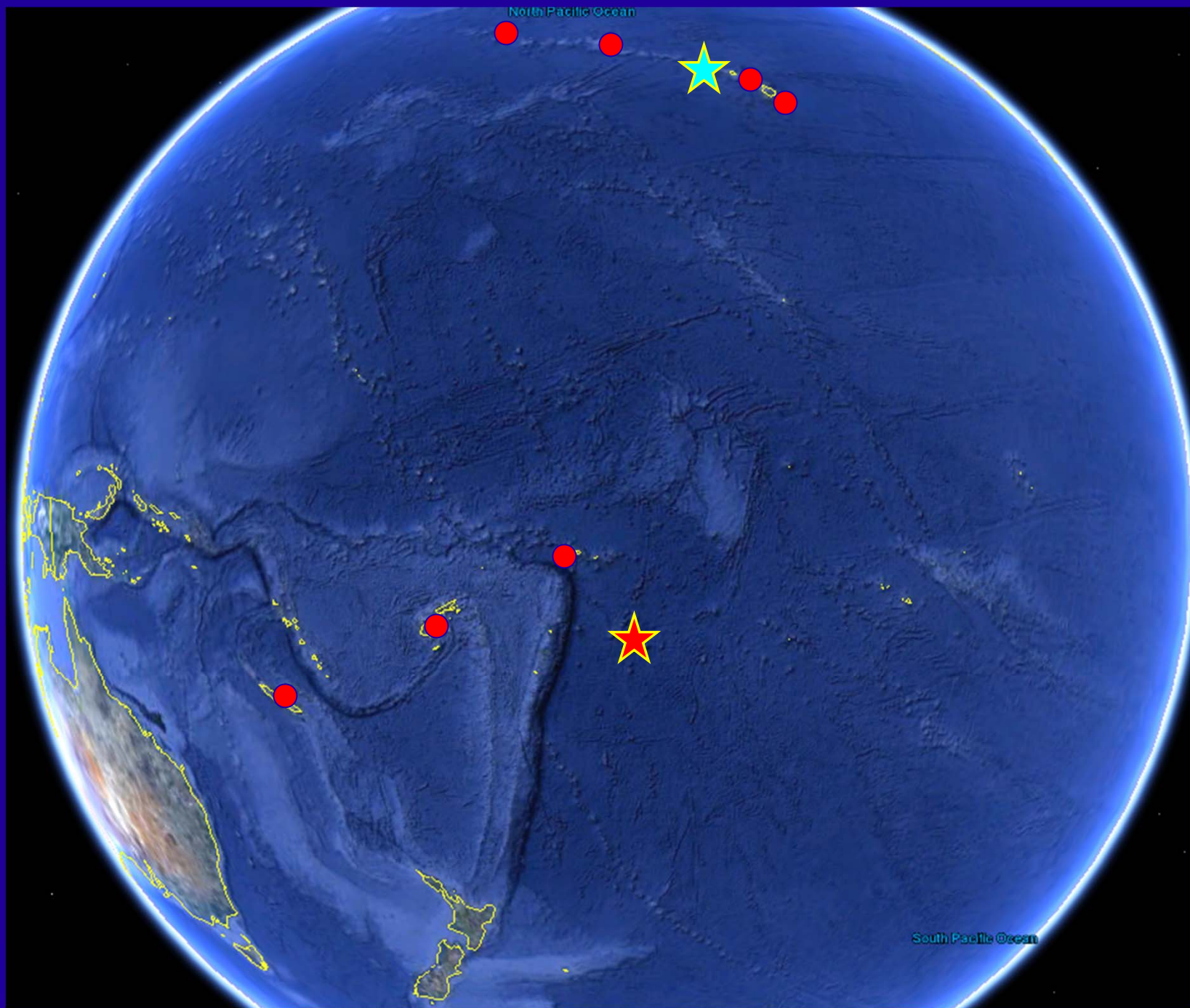


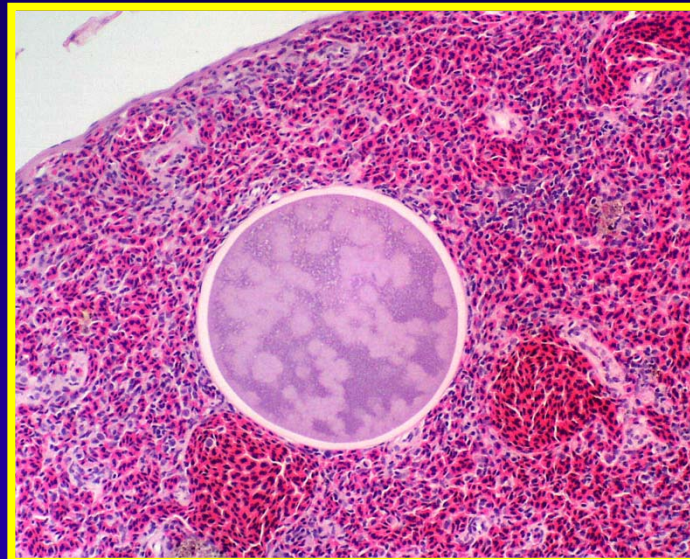
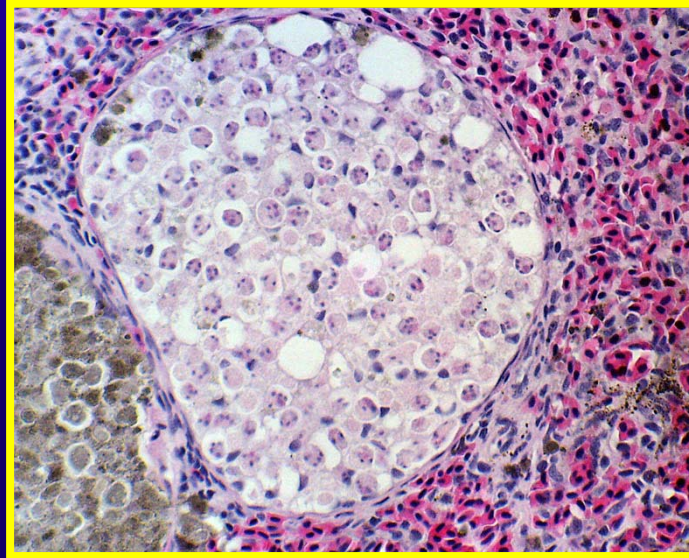


# Fish Disease

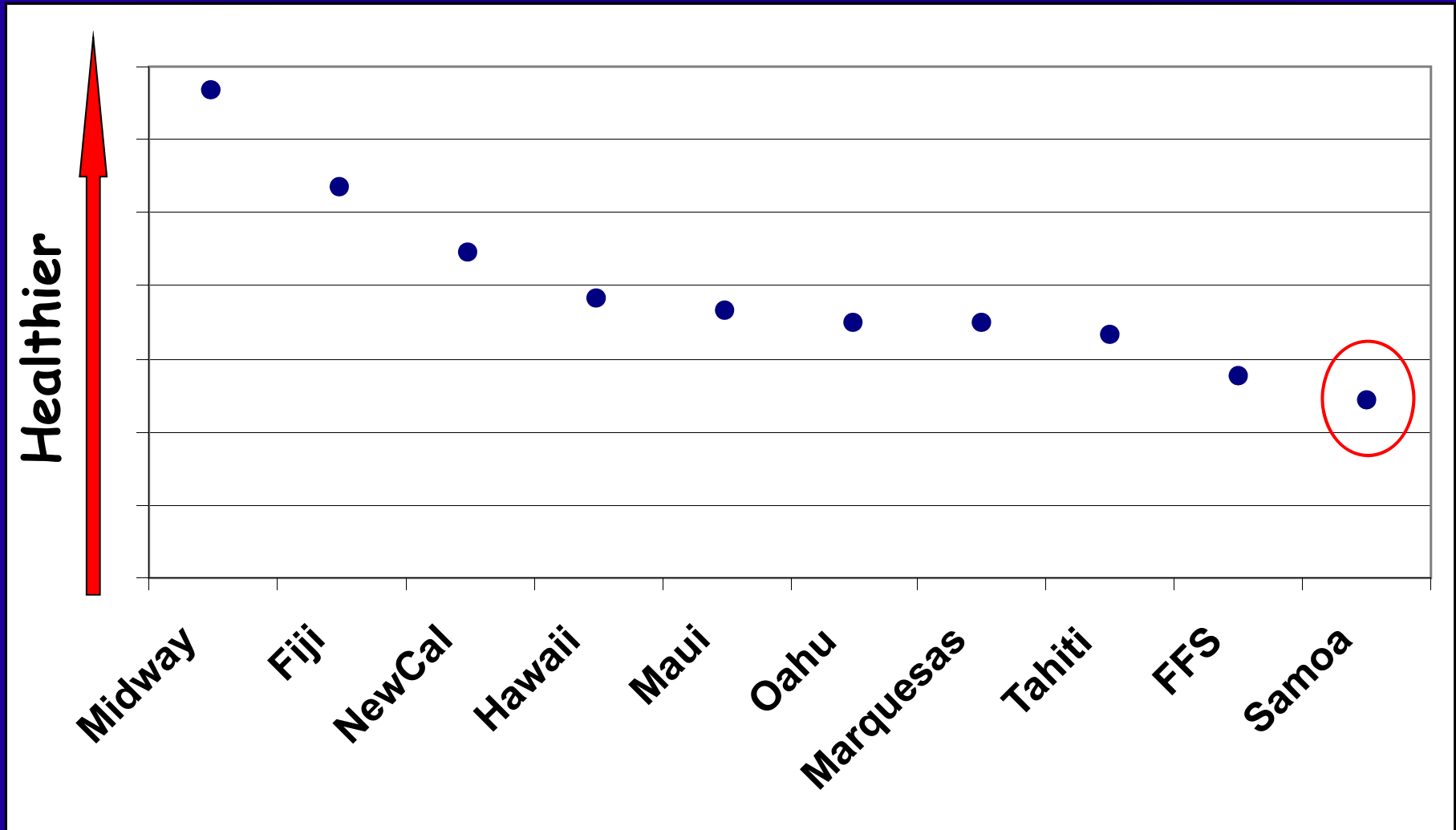








# Fish health index





The background of the slide is a deep blue gradient. On the left side, there is a vertical column of numerous light blue, semi-transparent bubbles of varying sizes. In the center, a large yellow-outlined circle contains an underwater photograph. The photo shows two divers in blue gear swimming over a coral reef. A large, dense plume of white bubbles rises from the divers towards the top of the circle. The text '733 5304' is overlaid in white serif font on the upper part of this circle.

733 5304

733 5306

733-5303

