

# COMMUNITY BASED FISHERIES MANAGEMENT PROGRAM (CFMP)



**(VILLAGE MARINE PROTECTED AREAS)**

**DEPARTMENT OF MARINE AND WILDLIFE RESOURCES**

**SAUMANIAFAESE UIKIRIFI**

# What is CFMP?

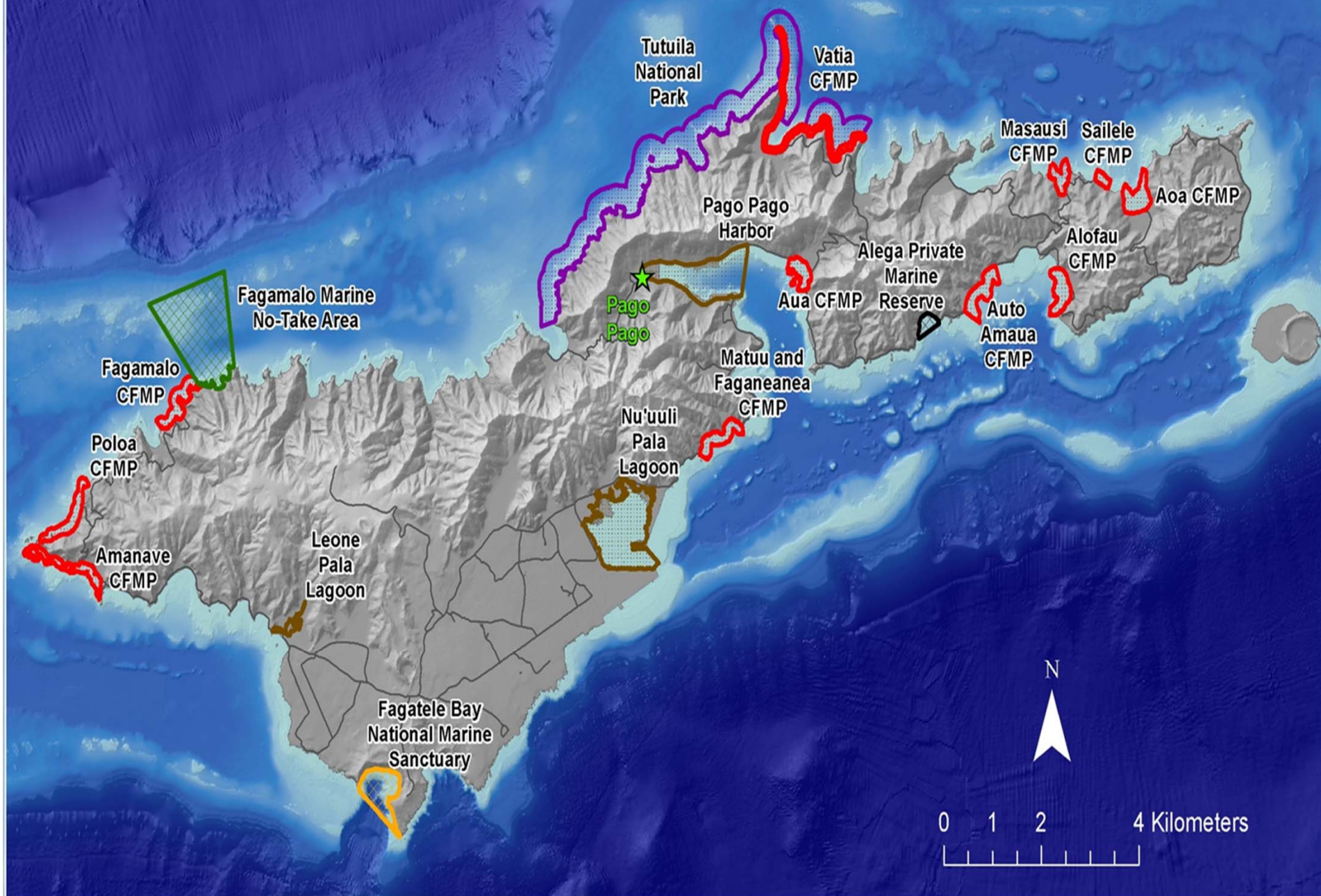
- ▣ Community-based Fisheries Management Program
- ▣ Conservation measure that aims to work with village communities to protect their inshore fishery resources by establishing Marine Protected Areas
- ▣ Co-management effort between government and village communities for conservation
- ▣ “Bottoms-up” approach for coral reef fishery management
- ▣ Supported by law- American Samoa Code Annotated Title 24 Chapter 10

# Background of CFMP

- ▣ Established in 2001
- ▣ Adopted the idea from neighboring Samoa
- ▣ Potential solution to overfishing
- ▣ Developed after a village survey was conducted
- ▣ 11 participating village communities around Tutuila



# Tutuila Island





# The implementation process



# SAILELE



Open for Fishing

TALIGA'I



No Fishing

LUMAFALÉ



Open for Fishing

AGAFOTU

**TALIGAI:** O le ogasami i le itu i sasa'e o le afioaga o lo'o fa'atagaina ai le fagota a tagata nu'u o le afioaga

**LUMAFALÉ:** O le ogasami o lo'o i le ogatotonu o le afioaga ua malilie le afioaga o le a fa'asaina mo se taimi fa'atulagaina

**AGAFOTU:** O le ogasami i le itu i sisifo o le afioaga o lo'o fa'atagaina ai le fagota a tagata nu'u o le afioaga





# Program responsibilities

## ▣ Conduct village meetings

-Initial Meeting, Group Meetings



-Committee Meetings (FMAC & MEC)



- ▣ **Provide trainings for village communities**
- ▣ Monitoring training- teach community members monitoring procedures
- ▣ Conduct monitoring survey
- ▣ Enforcement training for Deputization





## ▣ Outreach

- Target church youth groups
- Increase public awareness on environmental issues regarding VMPPA





# Socioeconomic survey

How implementing of Marine Protected Areas  
effect the livelihood of the communities





# Village responsibilities

- ❑ Participate in meetings and trainings provided by the program
- ❑ Set rules and regulations
- ❑ Collect the information for the meetings
- ❑ Draft a Village Fishery Management Plan
- ❑ Report any illegal activity in the designated area
- ❑ Patrol the VMPPA















19 12:53PM



# Strengths

- ▣ Enhances community involvement and participation in conservation activities
- ▣ Emphasizes co-management scheme with village communities
  - Encourage bottom-up approach for management
- ▣ Develop strong relationships with village communities
- ▣ Create educational opportunities for communities on marine environmental issues
- ▣ VMPA's are designated and managed
- ▣ Marine resources are protected

# Challenges

- ❑ Limited attention span/ Easy to open and hard to closed/new approach (Zoning areas)
- ❑ Not being able to meet community needs and sometimes wants
- ❑ Some communities are government dependent
- ❑ Availability schedules with communities
- ❑ Enforcement (Deputize mayor)



**REMEMBER**

**YOUR REEFS**



**YOUR RESOURCES**



**YOUR FUTURE**